



St Mary Magdalene C of E Through School

Peninsula Primary Campus

Autumn Term 2 - 2024



Headteacher's Message

Welcome back to the second half of the autumn term. Thank you for your generosity last half term in donating food to the Harvest collection. You gave a huge amount that will help others in the local area. The children took part in Harvest services and spent time reflecting on those who give, and how we are grateful and value the kindness of others. The children were given thank you cards and stickers to take from collective worship and give out to members of staff to show their gratitude for all that the staff do. We will continue thinking about kindness over this half term; ask your children what acts of kindness they have shown or received.

Already we have had lots of exciting learning happening! We all celebrated Black History Month and dedicated each Friday in October to learn more, celebrate and embrace the differences of each other. Year 5 pupils from all of our campuses went to Neasden Mandir (Hindu temple) as part of the City Makers project and their 'Amazing architecture' topic. Pupils visited the beautiful Mandir and really enjoyed the experience. We welcome parents to attend our trips and value the time that you give to school for supporting the children; especially when there is a complicated journey, or a very busy place that we are visiting.



In collaboration with the Greenwich Peninsula, we participated in a series of lantern-making workshops. The workshops were led by Pragya Kumar, from Artiday. As part of the lantern making the children learnt about the traditional art form from India and decorated their lanterns based on this art. The school community took part in the parade in November 2nd and shared the lanterns made by our students.

We are continuing to work on embedding the Koinonia Primary Lesson across the primary campuses with a particular focus on assessment for learning. Assessment is integral to progression; adults and children are thinking and acting to improve learning at many points in the lesson. Children also receive feedback on the learning that they will address using their blue pens in the following lesson, allowing them to be secure in a topic before going deeper with the learning. Please talk to your children about how they use their blue pens.

As you can see, everyone is busy with learning! I look forward to welcoming you to the many festive events that we have planned for the term ahead – please regularly check your emails for updates and the diary dates.

Mrs Savva-Brown

"So we, who are many, are one body in Christ, and everyone is joined one to another." Romans 12:5



St Mary Magdalene C of E Through School
Peninsula Primary Campus
Autumn Term 2 - 2024



A message from the School Chaplain, Rev Dom

This month has got me.

Well, I don't know about you but November has been quite a year.

So much has happened that has people looking everywhere for answers.

So many questions and in these days of social media, my brain has been quite full up of information and opinions and politics and grief for the world and the way it is or the way it might be in the not too distant future.

I've had to stop listening to all my usual podcast because I can't take on any more opinions about what the world will be like in the future or how many people are in distress just now.

Sometimes it feels like for all the good in the world, there seems to be an equal and opposite amount of bad, sad or mad in the world.

We would do well to focus on 3 things going forward: Scripture, prayer and care.

The disciples are warned by Jesus – that many things will fill up your head that won't be true or they will be but they are not yours to worry about. You just need to keep your eyes on God. Focus on Him and He will lead you.

Do you remember the still waters and green pastures, the feast to safely be at with our enemies because he is in charge – It's in the Psalms – we need to focus on that.

In the Psalms it also says of God:

You show me the path of life.

In your presence there is fullness of joy;
in your right hand are pleasures for evermore.

As we face the world together, let us remember the promises of God, the Hope offered through Jesus and the Joy that is being part of a community that cares.

Let us Pray.

In all these things Lord, may your will be done.

In what in our past, may your Grace forgive us.

In our future, may you Walk with us in your Spirit.

And in all things, may we look for the Light, the Love and the Way that blesses us and other.

Amen.

Rev. Dominic Hubbuck
Federation Chaplain
Koinonia Federation Schools
Assistant Priest with East Greenwich Team Ministry



<p>AUTUMN 2 – Theme: <u>Kindness</u> Federation Value – Responsibility SMSC: Loving Service</p>	<p>Ephesians 4:32 Be kind to one another, tenderhearted, forgiving one another, as God in Christ forgave you.</p>
--	--



Useful Information and Expectations

Uniform

PLEASE ENSURE ALL CLOTHES ARE CLEARLY LABELLED WITH YOUR CHILD'S NAME.

Lost property will be given to charity at the end of each term!

There has been a focus on children looking smart in their school uniforms and take pride in tucking their shirts in, wearing jumpers and cardigans neatly, and wearing plain black footwear. With your support, we have raised the standards of our appearances – thank you for working on this with us.

Our next target to looking smart, is improving our appearance when we are wearing our PE uniform. If your child feels cold, please do not send them to school wearing a skin (tight clothing under a shirt) but ensure they are wearing the school jumper or cardigan. Whilst we are wearing dark-coloured bottoms and jumper, they must be regular jumpers and bottoms, not sports wear. If children are not wearing the correct PE uniform, they may be asked to wear school PE uniforms. Parents will be called to discuss this.

Children will continue to come to school on their PE lesson day in their PE kit;

- Plain white t- shirt
- dark-coloured shorts / bottoms
- dark-coloured jumper or cardigan
- black trainers/plimsolls for PE.



Children should NOT be wearing as PE uniform;

- a hoody
- skins/ base layers under the white T-shirt
- football shirts
- sporty track suit with labels

When the children are on the campus, hoods should be down unless it is raining. This looks smarter, and we thank you again for supporting us with this.

To keep the children safe, only small studs (**no hooped earrings**) and a wrist watch is permitted. Other jewellery will be removed.

Allergies

We have multiple children and staff members with nut allergies, of which some have airborn allergies and are extremely dangerous. You will have received information from the admin teams, but we will continue to remind you about this allergy to ensure that all members of our school community are safe.

Please do not send your child into school with;

- Any nuts
- Nutella or other chocolate spread containing nuts
- Peanut butter
- Snacks/ cereal bars containing nuts



Always check the ingredients of any food you are sending into school – class party food, gifts for staff, packed lunches or anything else to be certain that they do NOT contain nuts. Sometimes they are not obvious! We thank you all for your cooperation and support with keeping out school family safe.



St Mary Magdalene C of E Through School
Peninsula Primary Campus
Autumn Term 2 - 2024



Safeguarding

Safeguarding and keeping our children safe are very important to us. If you have any suggestion on how we can improve on our safety measures, please do speak with Mrs Savva-Brown. If you have any concerns about any child's safety or child protection, please see **the school's Designated Safeguarding Lead – Mrs Ajayi ASAP.** If she is not available, please see Miss Williams or Miss Hoon or Mrs Savva Brown.

There are photographs of the Safeguarding team placed in each classroom, please talk to your children and encourage them to talk to the adults in school if ever they need to.

For information on Safeguarding, please see the Greenwich's Safeguarding Children Partnership website <https://greenwichsafeguardingchildren.org.uk/>

Please talk to your children about how they can keep safe using their mobile phones and other electronic devices.

<https://www.internetmatters.org/resources/tech-guide/mobile-phones-for-children/>

Please do not approach other children in or out of school if there are issues between children, speak with a member of staff who will be able to deal with this.

SAFEGUARDING

Are you concerned about the safety or welfare of a student or staff member?

If so, make sure you speak with a member of our safeguarding team.... Hoon



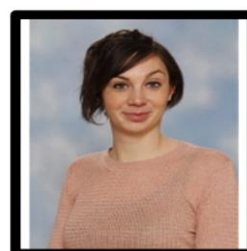
Mrs Ajayi Designated Safeguarding Lead



Miss Williams Designated Deputy Safeguarding Lead



Mrs Savva-Brown Safeguarding Team



Miss Hoon Inclusion and Safeguarding Team



Mrs Sheath Safeguarding Governor

KEEPING CHILDREN SAFE

Greenwich MASH Line – 0208 921 3172



Greenwich LADO – Laura Lumbis

0208 921 3930 (Mobile 07896781040)

Childrens-LADO@royalgreenwich.gov.uk