



St Mary Magdalene C of E Through School
Peninsula Primary Campus
Autumn Term 1 - 2024



Headteacher's Message

A very warm welcome back to the new year. It has been very nice speaking with you and hearing about your summer breaks on the gates, and getting to meet our new families. The children have returned with smiles and lots of energy for the term ahead which is fantastic to see.

Over the week, the children have been getting to know their adults, and new friends who have joined our federation family. It's heartwarming to see how everyone has settled in and welcomed new members of our family. I have enjoyed popping into classes and am pleased to share with you that the start of the term has been calm, with a gently buzz of excitement about learning. Our Reception children are getting into a good routine and already showing how brilliant they are at following the school rules and treating others with kindness and respect.

A big thank you to all of our families for working so closely with us at the start of the year to maintain those high expectations we have in place. Children's uniforms are looking very smart, you are very punctual, and you are modelling and encouraging your children to engage with staff with respect and smiles. We are all very keen to continue living out these high expectations as we go through the year, and again thank you for working with us to support your children.

Our first collective worship of the year focused on our termly theme, our value and how we can be courageous advocates. We came together in prayer and asked that we be given strength to be the best we can be, and show self-control and be responsible, and in those times when we falter we asked for strength to put us back on the right path and learn from our mistakes.

Over the next few weeks you will get to meet the teachers, some that you already know and some who are new to the federation. This is a great opportunity to get to know each other more, and begin working together to support your child to be a happy, successful learner.

Please look out for the termly dates poster and add these to your calendars.

I look forward to seeing you on the gates and at the many events we will have over the term, and wish you all a fantastic term ahead.

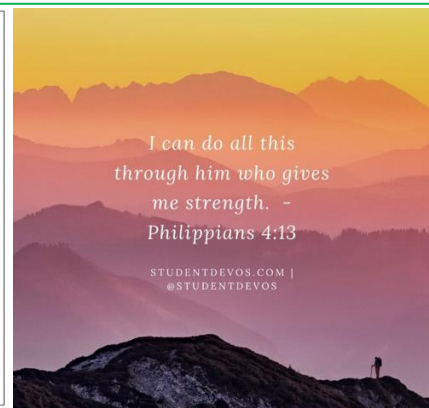
Mrs Savva-Brown

"So we, who are many, are one body in Christ, and everyone is joined one to another." Romans 12:5

Please help your children to learn our termly theme, value and and be courageous advocates by showing strength and speaking up for others.

AUTUMN 1 –
Theme: Self Control
Federation Value –
Responsibility
SMSC: Courageous
Advocacy

Philippians 4:13
I can do all this through
him who gives me
strength.





St Mary Magdalene C of E Through School Penninsula Primary Campus Autumn Term 1 - 2024



A message from the School Chaplain, Rev Dom

Welcome! Or Welcome back, if you've been here before.

Welcome is a funny word. A lot different from hello or hi.

It was first recorded as being used in the 1300's and is very similar to the way European countries greet their guests. A word made up of 'a pleasure or joy' or 'choose' and 'for my guest to arrive'.

At home we may have a welcome mat beside the door, we may offer our guests a seat, a drink and our attention. But how do we do it at school?

Staff welcome children, young people and families at the gates and welcome them inside.

Children welcome visitors to their school or classroom with a cheery Good Morning.

And classes will welcome new people by supporting them with a buddy or friend.

I wonder how parents welcome new parents, or children welcome new children.

Welcome is a powerful thing in the Bible – life-changing sometimes.

Not only do we hear of Abraham and Sarah welcoming God into their tent, or Jesus being welcomed at the house of Zacchaeus, but the disciples are told to go out into the neighbourhoods and bring good news and be welcomed into people's homes.

As we start a new school year – what will you Welcome? Take pleasure, make a choice to invite into your home, your life, timetable?

How will you welcome the positive things that bring you joy and turn away those things that steal it?

How might you support and pray for our schools that they may continue to be welcoming and that our new starters will feel welcomed by everyone?

Lord God,

We thank you for our schools, homes and communities.

We pray that they may be welcoming to those who need to know they are loved, accepted and valued.

Help us to welcome into our lives the things that bring us joy.

Help us to turn away those things that bring us sadness and doubt.

O God, as you welcomed all people, let us welcome you into lives that we make the world a better place.

Amen.

Rev. Dominic Hubbuck

Federation Chaplain

Koinonia Federation Schools

Assistant Priest with East Greenwich Team Ministry





St Mary Magdalene C of E Through School

Peninsula Primary Campus

Autumn Term 1 – 2024



You are invited to come into school to meet your child's teacher. A member of the senior leadership team will also be joining to answer any questions that you may have. There will be a presentation in the hall for years 2 – 6 and time to visit the classrooms where you can chat with the class teacher and see where the magic happens!

Reception class teacher

Friday 13th September – 1:20pm – 1:40pm

Reception children and parents to meet the teacher together in the reception classes.

Year 1 class teachers

Thursday 19th September 9:00am – 9.30am

Presentation in the hall.

Year 2 class teachers

Monday 23rd September 3:30pm – 4:00pm

Presentation in hall at 3:30pm, and then a classroom tour.

Year 3 and 4 class teachers

Monday 16th September 3:30pm – 4:00pm

3.30 – 3.45pm	Year 3 in hall
3.30 – 3.45pm	Year 4 classrooms tour
3.45 – 4pm	Year 4 in hall
3.45 – 4pm	Year 3 classroom tour

Year 5 and 6 class teachers

Tuesday 17th September 3:30pm – 4:00pm

3.30 – 3.45pm	Year 5 in hall
3.30 – 3.45pm	Year 6 classrooms tour
3.45 – 4pm	Year 6 in hall
3.45 – 4pm	Year 5 classroom tour

Wet Play Dismissal Arrangements

Wet dismissal can be a very hectic time. please be patient with the staff, and do not come into the building and wait for your child to be called to you at the door.

- ▶ Reception class – **Orchard** class will be dismissed from their class as normal.
- ▶ Year 1 – **Stephens** Class will be dismissed from the double doors by the main staircase. This is further along from the Reception Classes, Studio and toilets.
- ▶ Year 2 – **Ipgrave** and **Chessun** classes will be dismissed from the outdoor Nursery area.
- ▶ Year 3 – **Sanders** and **Jerwood** classes, will be dismissed from the door (closest to the Nursery) leading to the staircase.
- ▶ Year 4 – **Elliott** and **Palmer** classes will be dismissed from the first door (closest to the nursery) in the main hall.
- ▶ Year 5 – **Talbot** and **Powell** will be dismissed from the second door (furthest from the nursery) in the main hall.
- ▶ Year 6 – **Eastaugh and Gregory** classes will be dismissed from the second door (furthest from the nursery) in the main hall.



St Mary Magdalene C of E Through School

Penninsular Primary Campus

Autumn Term 1 – 2024



Useful Information and Expectations

Organised and Prepared

Please make sure that your child has everything that they need when they arrive at school. If you are dropping forgotten items off in the office, they will be delivered to your child's class at break or lunch time as we do not want to disturb the learning time.

The start and end of the school Day

Gates open for drop off between **8.40 am and 8.55 am** for all pupils. Please try not to arrive too early as we cannot open the gate until 8.40am. Pupils should be collected promptly at the end of the day at **3.10 pm**. Please ensure your child's pick-up arrangements are communicated with the school. Reception pupils are dismissed from the classroom and all other years are dismissed from the MUGA pitch.

Attendance and Punctuality

We would like to encourage 100% attendance and welcome your support with this. Children who are not in school by **8.55 am**, miss out on the essential information that class teachers give their children, as well as the settling down time each morning, in preparation for a day of fun, interesting learning.

It is important that we know where the children are and we are required by law to record this information; please call the school office, or answer your phone to school so that we can ensure all children are safe and well.

School Lunch

School dinners are FREE to all children in school. Please take up this opportunity. Dinners are prepared and cooked fresh each day in our own kitchen. If your child brings a packed lunch to school, please ensure it is healthy and **does not include nuts**, sweets, chocolate or fizzy drinks. All packed lunch bags should be well labelled. **If your child wishes to change from packed lunch to school dinners, please ensure you let the school office know. This is to ensure all children receive a meal, and we reduce the amount of wasted food.**

Snacks

Children in year groups Reception, 1 and 2 are provided with a piece of fruit each day. Pupils in Years 3, 4, 5 and 6 are permitted to bring in fruit for a snack at break time – no other food is allowed, **especially nuts**, we are a **NO NUT school**.

Allergies

We have multiple children and staff members with nut allergies, of which some have airborn allergies and are extremely dangerous. You will have received information from the admin teams, but we will continue to remind you about this allergy to ensure that all members of our school community are safe.

Please do not send your child into school with;

- Any nuts
- Nutella or other chocolate spread containing nuts
- Peanut butter
- Snacks/ cereal bars containing nuts

Always check the ingredients of any food you are sending into school – , trips, international events, class party food, gifts for staff, packed lunches or anything else to be certain that they do NOT contain nuts. Sometimes it is not obvious!





St Mary Magdalene C of E Through School

Penninsul Primary Campus

Autumn Term 1 - 2024



Useful Information and Expectations

Uniform

PLEASE ENSURE ALL CLOTHES ARE CLEARLY LABELLED WITH YOUR CHILD'S NAME.

Lost property will be given to charity at the end of each term!

Children will continue to come to school on their PE lesson day in their PE kit - white t- shirts, dark-coloured shorts / bottoms, black jumper or cardigan (**no hoodies, skins or football shirts**) and black trainers/plimsolls for PE. Hoods should be down when the children enter the campus, unless it is raining.

Please ensure that your child is wearing the correct uniform, including their PE uniform. Children should not be wearing a skin under their polo shirts, if they get cold, they need to wear a uniform jumper or cardigan. If children are not wearing the correct uniform, they may be asked to remove it and may be provided with school uniform. Shoes and trainers should be black, with no colours or symbols on them.

Small studs (**no hooped earrings**) and a wrist watch if your child can tell the time. Other jewellery will be removed.

Golden Rules

They are as follows:

1. Do be gentle – don't hurt anybody
2. Do be kind – don't hurt people's feelings
3. Do be honest – don't cover up the truth
4. Do work hard – don't waste time
5. Do look after property – don't waste or damage things
6. Do listen to people – don't interrupt



Pencil Cases and Other Items From Home

Children should not bring in pencil cases, pencils, pens or other items from home; only school equipment can be used. This is to ensure fairness to all children.

Water Bottles

Please ensure that your child brings a water bottle to school each day – no glass. It needs to be clearly labelled with your child's name.

Breakfast Club

If your child requires a place at our breakfast club. Please telephone the office/Miss Harper and speak to them about reserving a place. Places need to be paid for in advance.

After School Club

After school club is completely staffed and managed by Simply Play. Payments need to be made directly to the after-school staff – NOT the school office. Parents/carers will need to contact Simply Play directly for questions relating to spaces. Contact: Matthew Johnson Telephone: 020 3478 8567

Photos

Please do not take photos of other children in school. Photos of your child taking part in collective worships, singing etc, should not be put on social media.

Party Bags

We will not be distributing party bags or birthday cake to celebrate birthdays. If your child has a birthday and you are looking to provide the class with a treat, why not buy a book for the class - inscribed with their name!



St Mary Magdalene C of E Through School
Penninsula Primary Campus
Autumn Term 1 - 2024



Safeguarding

Safeguarding and keeping our children safe are very important to us. If you have any suggestion on how we can improve on our safety measures, please do speak with Mrs Savva-Brown.

If you have any concerns about any child's safety or child protection, please see **the school's Designated Safeguarding Lead – Mrs Ajayi. ASAP.** If they are not available, please see Miss Williams, Miss Hoon or Mrs Savva Brown.

There are photographs of the Safeguarding team placed in each classroom, please talk to your children and encourage them to talk to the adults in school if ever they need to.

For information on Safeguarding, please see the Greenwich's Safeguarding Children Partnership website <https://greenwichsafeguardingchildren.org.uk/>

Please talk to your children about how they can keep safe using their mobile phones and other electronic devices.

<https://www.internetmatters.org/resources/tech-guide/mobile-phones-for-children/>

Please do not approach other children in school if there are issues between children, speak with a member of staff who will be able to deal with this.

SAFEGUARDING

Are you concerned about the safety or welfare of a student or staff member?

If so, make sure you speak with a member of our safeguarding team.... Hoon



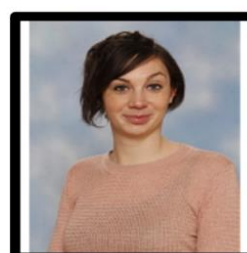
Mrs Ajayi Designated Safeguarding Lead



Miss Williams Designated Deputy Safeguarding Lead



Mrs Savva-Brown Safeguarding Team



Miss Hoon Inclusion and Safeguarding Team



Mrs Sheath Safeguarding Governor

KEEPING CHILDREN SAFE

Greenwich MASH Line – 0208 921 3172



Greenwich LADO – Laura Lumbis

0208 921 3930 (Mobile 07896781040)

Childrens-LADO@royalgreenwich.gov.uk